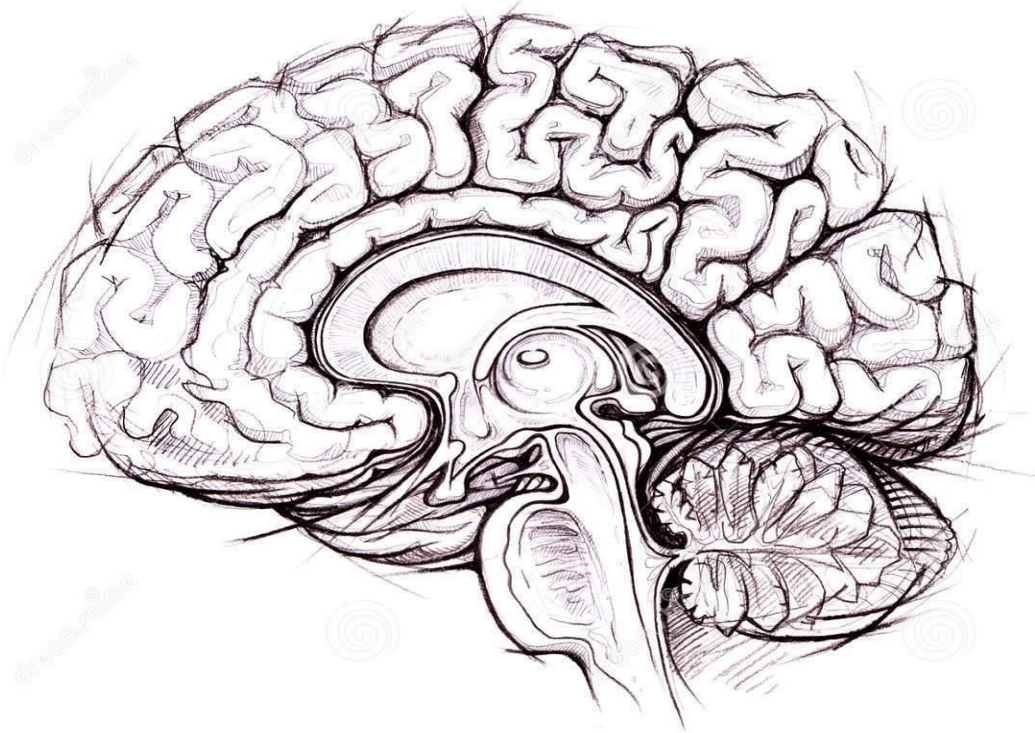


# Fulton's Brain Assignment



Download from  
**Dreamstime.com**

This watermarked comp image is for previewing purposes only.

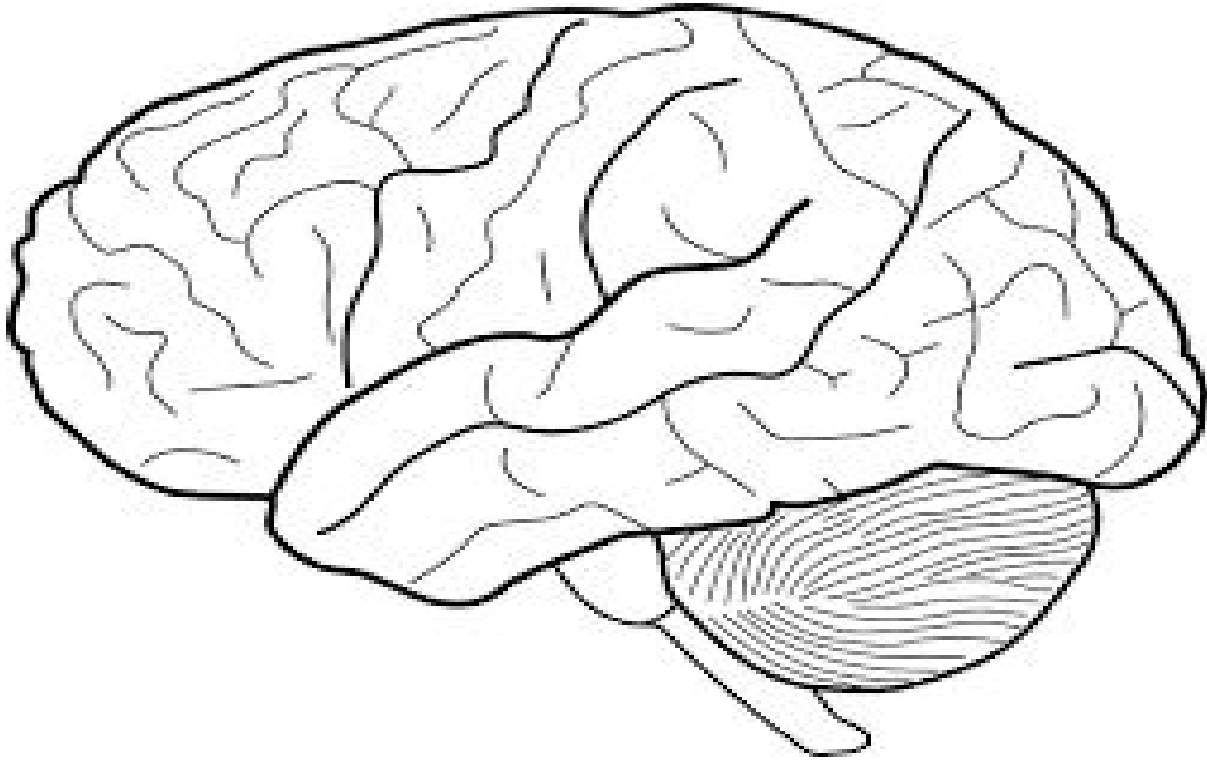
ID 19003669

© Alena Hovorkova | Dreamstime.com

For each of the following brain structures, label, color and identify the function of each. Pick 3 structures and find a case study that highlights damage to this area and corresponding behavioral problems exhibited by the individual. Please site your source at the end of your explanation.

1. Medulla
2. Pons
3. Basal Ganglia
4. Reticular Formation
5. Cerebellum
6. The Limbic System
  - a. Hypothalamus
  - b. Hippocampus
  - c. Amygdala
  - d. Pituitary Gland

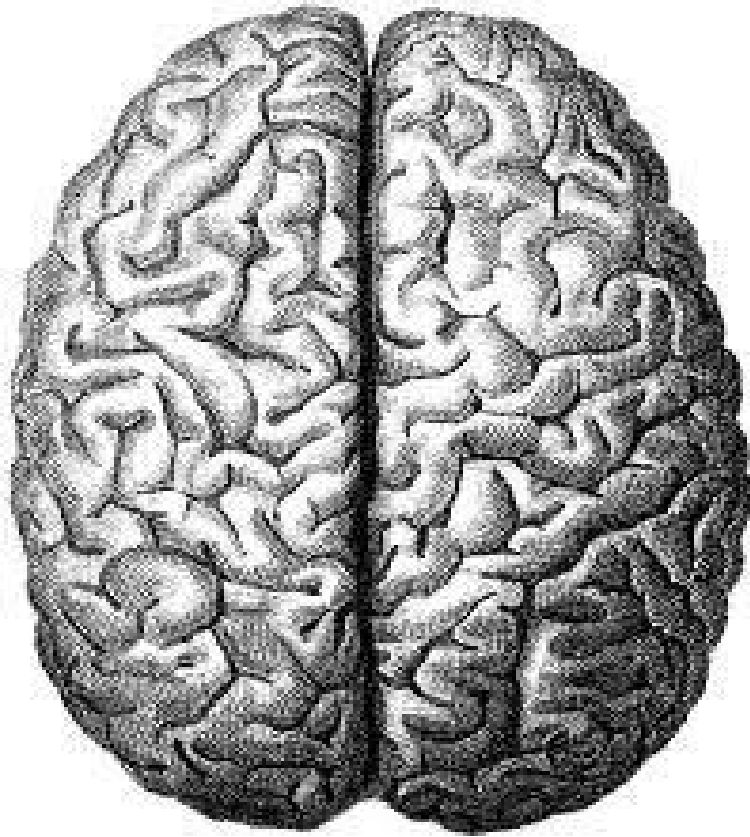
## Fulton's Brain Assignment



For each of the following brain structures, label, color and identify the function of each. Pick 3 structures and find a case study that highlights damage to this area and corresponding behavioral problems exhibited by the individual. Please site your source at the end of your explanation.

1. Frontal Lobe
2. Parietal Lobe
3. Temporal Lobe
4. Occipital Lobe
5. Motor Cortex
6. Somatosensory Cortex
7. Broca's Area
8. Wernicke's Area

## Fulton's Brain Assignment



For each of the following brain structures, label, color and identify the function of each.

1. Left Hemisphere
2. Right Hemisphere
3. Corpus Collusom
4. Right Motor Cortex
5. Left Motor Cortex
6. Right Somatosensory Cortex
7. Left Somatosensory Cortex